

# • Minelab • Times •

## E-TRAC



## is now available!

### Minelab's most technologically advanced detector sets a new benchmark for the industry!

E-Trac is Minelab's most technologically advanced detector, incorporating unique Full Band Spectrum (FBS) Technology. Its sleek, sturdy design, innovative control panel, intuitive menus, clear LCD, robust lightweight coil and comprehensive targeting options set E-Trac apart from any other detector available today.

Minelab has taken a further ground breaking step by incorporating a USB interface, which will allow you to download and upload E-Trac settings, User Modes and Discrimination Patterns using your own Personal Computer (PC).

This advanced feature is designed to allow you to quickly configure the E-Trac to suit particular detecting environments and preferred targets. You can then share your experiences and settings with other detectorists. The installation CD and Xchange User Guide supplied with your E-Trac ensure you can get started straight away.

This allows you to build a resource library charting your success with your E-Trac. Download and store your valuable Settings and Patterns for your favourite sites and upload them as required. There's no limit to the number you can store on your PC so make the most of your E-Trac and never worry about losing your successful settings again!

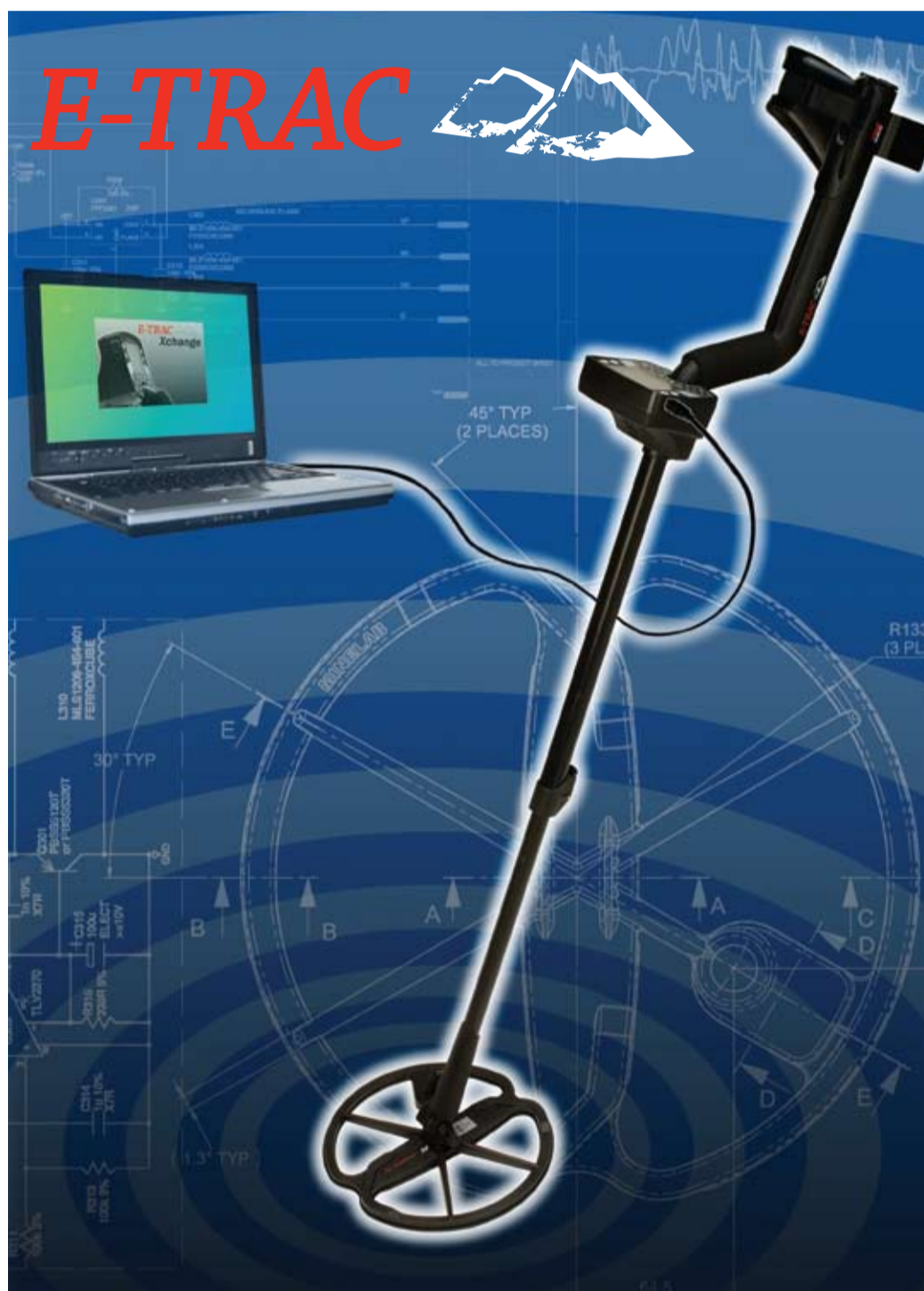
E-Trac will locate valuable metal objects in a variety of mineralised ground conditions such as extremely salty soils, sea water, wet beach sand and highly magnetic ground conditions. By using the E-Trac you can become one of the many successful detectorists who combine their passion for the outdoors with the excitement of discovering valuable coins,

relics, gold and jewellery on a regular basis.

Other exciting features that you will notice on the new E-Trac are:

- More Factory Pre-set User Modes so the beginner can just switch on and start detecting;
- A totally new menu structure that is both logical and intuitive. Makes it easy and simple to make whatever changes you want;
- The LCD display screen is larger and easier to read with a lot more information available;
- The method of creating your own personal discrimination patterns is faster and much simpler;
- Sensitivity control now gives you accurate feedback on preferred settings;
- Depth gauge & Pinpoint are more accurate so you can locate your target with ease;
- Audio controls let you determine the type of target signals you prefer;
- Re-styled and re-designed upper shaft that gives incredible balance and comfort;
- And much much more.

To learn more, pop into your local dealer or phone Minelab to have a brochure sent to you.



## Detect the world with E-Trac



The E-Trac is Minelab's new benchmark treasure detector. Utilising FBS technology, with a faster micro-processor, the E-Trac incorporates some of the great features found on other Minelab detectors along with new innovative feature that could only come from a forward thinking company like Minelab. The E-Trac is the first Minelab detector, which has the ability to communicate with your home computer (PC). This is achieved via the USB port found on the side of the control box.

The E-Trac is supplied with a USB cable, and the Xchange software, which allows you to

upload Patterns and User Modes from the E-Trac. These can then be saved onto your computer and downloaded back to your detector any time you wish. You can then develop an unlimited library of discrimination patterns and user modes, to suit all your favourite detecting locations, which can then be loaded back into E-Trac at any time.

The Xchange program allows you to modify User Mode settings, which can either be saved onto your PC, or uploaded into your E-Trac. You can also download, save and upload Discrimination Patterns. User Modes and Discrimination Patterns that you have modified while detecting in the field can be downloaded from the E-Trac, allowing you to send them to detecting buddies via email. You can also upload your patterns to an internet hosting site like [www.minelabownersforum.com](http://www.minelabownersforum.com) for other operators to enjoy, and you can download special Patterns and Modes posted by other users. The possibilities are endless!

One example might be a new user, let's call her Mary, who is trying to create a good pattern and set of settings to suit her particular area. This area is quite unique as it is loaded with screw caps and aluminium foil, but there is a good chance of finding pre-decimal coins and gold jewellery. An area such as this would require quite a specific pattern, and possibly a special combination of settings for maximum effectiveness.

To help Mary along, a fellow detector club member, David, might have already developed a Huntfield Parklands Mode, (as an example) and can just email it to her. Mary thanks him, and after loading the new mode into her E-Trac, starts detecting at Huntfield Parklands, and starts to have some success.

After a few outings, Mary modifies some of her settings, and makes a few edits to the pattern, and her find rate increases. She then sends the Huntfield Parklands 2 Mode back to David, with a short note: "Thanks again, but give this one a try!!" As you can see, sharing User Modes can be both fun and rewarding, and will add another element to this exciting hobby!

The Xchange also allows you to save a Backup of all your E-Trac's User Modes, Discrimination Patterns and Settings. Saving a Backup to your PC will ensure you can restore all of your detector settings and patterns if the need arises.

The E-Trac Xchange is versatile and easy to use, and will allow you to get the most out of your treasure hunting experience.

## The Forgotten Instruments of Burke & Wills



Every Australian school child learns the story of Robert Burke and William Wills. The details of the infamous expedition from Melbourne, Victoria through the almost center of Australia up to the Gulf of Carpentaria and back, only to die at the appointed meeting place on Coopers Creek, just a few days after the supply party gave up waiting and had left. What is also well recorded was that in

the last weeks, when their camels & horses were dying, they were forced to bury their scientific tools, with the clear intention of returning for them later.

For decades, expeditions have been mounted to try and locate this cache of tools. A number of these expeditions conducted out of Melbourne have been loaned metal detectors by Miners Den and Minelab Electronics. For many years the searches concentrated on areas that proved to be off target and barren. However earlier this year, what has become known as 'the Plant Camp' or Camp R47 is thought to have been discovered. With the use of Minelab detectors, a number of significant metal tools and relics have been located.

If you are interested in viewing the story of this exciting find, you can see "The Sunday program" aired on July 13 by visiting:

[http://sunday.ninemsn.com.au/sunday/cover\\_stories/article\\_2509.asp](http://sunday.ninemsn.com.au/sunday/cover_stories/article_2509.asp)

## New Web Site



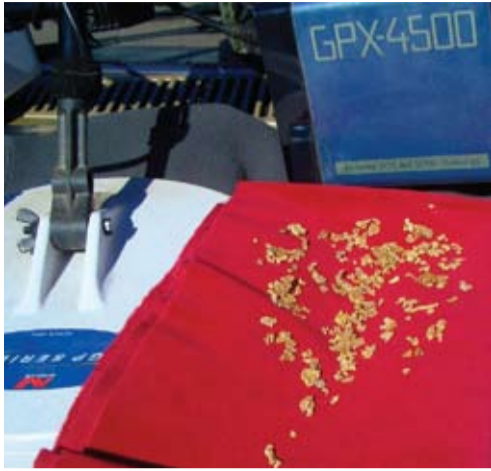
A fabulous new web site is now up and running.

Visit today at [www.mlotv.com](http://www.mlotv.com)

Minelab in association with MinelabOwners.com are delighted to introduce 'MinelabOwnersTV' or MLOTV. This is a website that is dedicated to providing a forum for all people who are looking for the latest information on metal detectors. Full of videos & snapshots it covers detecting techniques and handy hints, latest news, and members finds. Visitors can load and share their own handy hints & tips. It's full of fun and heaps of information.

If you want to see the Brand New E-Trac being demonstrated & explained... it's on MLOTV, now.

# 249 Reasons to own a GPX-4500



Below are the actual emails sent to Nenad Lonic at Minelab.

16/6/08

Hi Nenad, here's a photo of the piece found on Thursday, broad dipping signal over a foot deep, maybe 18". After cleaning it weighed 7.7 grams. Found 1 and 2 gram bits nearby. Extremely varied red soil.



18/6/08

Hi Nenad, 16 pieces today, largest 11 grams. It's all in the acid so I will email you a photo when clean. All from known ground. Am taking a large pick tomorrow as the 11 gram bit was deep in original ground and a very soft signal. Have to bite the bullet and fit a large mono but only have 15" elliptical. An 18"

round would be good. Suspect a few targets 7-10 grams out of reach of 11" coil.



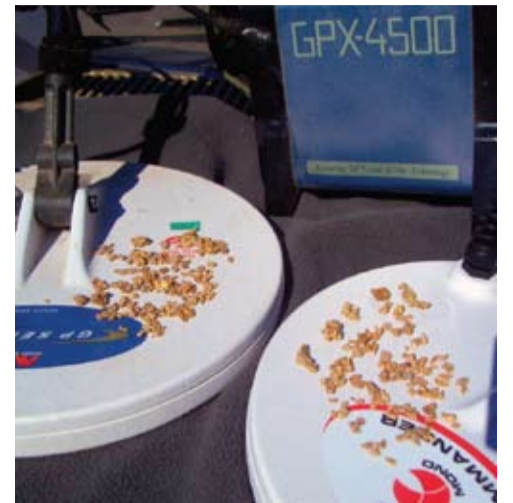
20/6/08

Only got 5 pieces today. 39 grams, 5.5, 3.1 and smaller. Total, 48 grams. Still using 11" Commander. Gold in acid, about 2 weeks till I send photos. This is on a new patch, deep ground; used big pick as suggested in last email.

2/7/08

Hi Nenad, it's good to be out detecting again. Sorry, I can't comment on larger coils yet as I spent the afternoon working out where to start and finish on this patch so I was only using an 11" Commander. That probably explains why I only found 7 pieces, largest 121.4 grams!

It is in the acid at the moment and will lose maybe half its weight but I'm happy. Will be string-lining tomorrow and running larger coils down each lane. Life's good, cheers.



Dear Minelab,

Just thought I'd drop you a note to tell you how I've been going with the new detector. You will see from the attached photos, 249 pieces of gold weighing a total of 3 oz's that have mainly come from places that I've previously detected with every other Minelab model. I've been finding gold on all of my old patches and on noisy ground, where earlier I have been unable to find a target. Anyone considering buying the new detector should try one and try the new Enhance timing on noisy ground... they will be sold! Mono loop coils can be used on this machine almost exclusively. Ground noise, hot rocks and false signals are almost a thing of the past. Out of the last forty or so trips, I've only come home without gold once!

Archie (Victorian Goldfields)

## Thank You!

Minelab would like to thank all its customers who were asked to send in their GPX-4500 for service as per our service notice. While this audio fault only effected a small number of the 4500's that had then been sold, we realize that this did cause inconvenience to some customers and would like to take this opportunity to thank you for your support.

## GPX-4500 Timings

By everyone's opinion, the GPX-4500 is an exceptional detector. One of the new features of the GPX-4500 is the wide range of timings now available to optimize the detector for different conditions. The range of Timings now available are: Sensitive Smooth, Enhance, Sensitive Extra, Normal, Salt / Coarse, and Sharp.

The best way to understand when to use each one is to understand each of their advantages & disadvantages. In most timings the differences can simplistically be defined by the depth and sensitivity that the timing provides, as well as their ground handling abilities in different soil conditions.

Here is a brief look at each of the timing options, and how they are best used.

**Salt / Coarse** – is suited to mineralized soils with a high salt content. It has great depth capability on large targets but poor sensitivity

for small targets, so is a good option when using a large coil in deep ground.

**Normal** – provides good depth combined with good sensitivity, so is the best timing to use in new areas, for patch finding and general detecting in average soils. It will work well with Monoloop coils in less mineralized soils, or DD coils in mineralized ground.

**Sensitive Extra** – is very sensitive to small targets, and will provide the best depth on smaller gold and specimens. However, due to its high sensitivity, it is quite reactive to mineralisation, so is best suited to mild ground conditions, such as pipe-clay, schists, some bedrocks, and any areas devoid of ironstone. A combination of Sensitive Extra, and an 11" DD in Mono (coil switch) can be very effective.

**Sensitive Smooth** - was a new timing that was introduced into the previous GPX-4000

model and became a very popular option. It provides extremely stable operation in the most difficult, heavily mineralized ground and is particularly well suited to operating with a Monoloop coil. It is quite sensitive to small gold, but lacks depth on large deep targets.

**Enhance** - With the GPX-4000, it was found that a lot of mineralized ground was not quite bad enough to require the use of Sensitive Smooth, but was still mineralized enough to be difficult to work using Sensitive Extra or Normal. It was felt that a timing was needed that performed similar to Smooth, but had improved depth and signal response. By testing in a wide range of ground conditions, the Enhance timing was found to give significant depth improvements over Smooth, particularly on larger gold, while still canceling the majority of false signals from hotrocks, clay domes and other ground effects.

Since the release of the GPX-4500, operators armed with their favourite monoloop coils have quietly been going about their business, pulling out lots of gold from even the most heavily worked areas. Some users have even reported finding gold from areas that had always looked the part, but never gave up any gold using previous detectors.

**Sharp** – is the sixth timing that is available on the GPX-4500. Sharp is a very specialized timing and is best used in locations where the mineralisation is relatively mild. It can be quite reactive in highly mineralised soils, but by using it in conjunction with a Double D coil in quieter soils, the Sharp timing will give excellent depth and an easy to hear sharp target response. It is also a handy tool for checking a suspect faint signal.

See the table below for GPX-4500 Timings Comparison Chart.

TIMING	Sharp	Salt Course	Normal	Enhance	Sens Smooth	Sens Extra
<b>PERFORMANCE</b>						
EMI immunity	Poor	OK	Good	OK	Very Good	Good
Depth (large targets)	Excellent	Very Good	Good	Good	OK	OK
Sensitivity (small targets)	Very Good	Poor	OK	Very Good	Good	Excellent
Mineralised soil suitability	Poor	Good	OK	Very Good	Excellent	Poor
Mild soil suitability	Excellent	Poor	Good	OK	Poor	Very Good
Suitability with DD coils	Very Good	Excellent	Very Good	OK	Poor	Good
Suitability with Mono coils	Poor	Good	Good	Excellent	Excellent	OK
Performance in Salty soil	Poor	Excellent	OK	Poor	OK	Good
Sensitivity to Specimen gold	Good	Poor	OK	Very Good	Good	Excellent

Minelab GPX-4500 Timings Comparison Chart

## Billabong Aboriginal Corporation

Earlier this year Minelab was approached to assist a worthwhile program based in NSW. The program takes youths (16 – 21 approx) aged in small groups, away for 2 to 3 day excursions. It is found that by taking them out of their normal urban environment and comfort zones they achieve developmental skills including healthy exercise, team building, work ethics & self confidence. The program includes numerous activities all offering various challenges. Metal detecting was found to be an activity that was both novel and interesting for the participants.

A report back from the Corporation quoted "This part of the program is about experiential learning, self confidence, and working with cultural diversity. The young lads participate in a wide range of projects both short and

long term that they would not otherwise have the opportunity to experience. Everybody hears about prospecting with metal detectors but very rarely do they have the opportunity to experience what the thrill is about. The boys really enjoyed this part."



## Just a few details about my find



*"This is your best detector - it finds the gold.  
From a Happy customer - Tony"*

The ground was north of Kalgoorlie and about 100 meters from the main road. The 4500's ability to detect very small nuggets in highly mineralized ground lead to the 6.5oz nugget.

We found a total of 157 nuggets in an area of no more than 200 by 150 meters. The area had been gone over before but the 4500's ability to be super quiet and punch deep for small

targets in difficult ground was amazing. If I had missed those first tiny nuggets (less than a gram at 8cm), I would have missed walking across the 6.5oz nugget.

Photo shows a 6.5oz nugget plus 4 other small nuggets, all part of 10oz I found using my 4500.

Depending on the ground variations, my three settings I used were:

- Deep, Enhance, Fixed;
- General, Enhance, Tracking and Fixed;
- Custom (Hi-Mineral), Enhance, Tracking and Fixed.

The only other setting change was to pull stability control back from 10 to 7.

I have always used a speaker on my previous machines and the new in-built amplifier is very good. All other settings were Factory Preset. You guys know how to set-up a detector.

Tony

## Worth its Weight in Gold



The GPX-4500 is the best yet! Here is a photo of 60 pieces of gold off ground that I and everyone else has been detecting for 25 years. One particular lot of diggings that I do on a regular basis, I have not had a signal on in the last three years - the first day with the 4500 produced 7 pieces of gold.

Don

## Do you want to be in our next issue?

Minelab are always interested in customer stories and photos to use in the Minelab Times as well as on our website. If you have anything you'd like to share, or suggestions on what you'd like to see in the future issues, feel free to contact our Marketing Department on 1800 637 786 or Email: [ho@minelab.com.au](mailto:ho@minelab.com.au)

Minelab reserves the right to respond to ongoing technical progress by introducing changes in design, equipment and technical features at any time. Certain descriptions and illustrations may differ from the exact model purchased.



**MINELAB**  
[www.minelab.com](http://www.minelab.com)

Tel. 1800 637 786