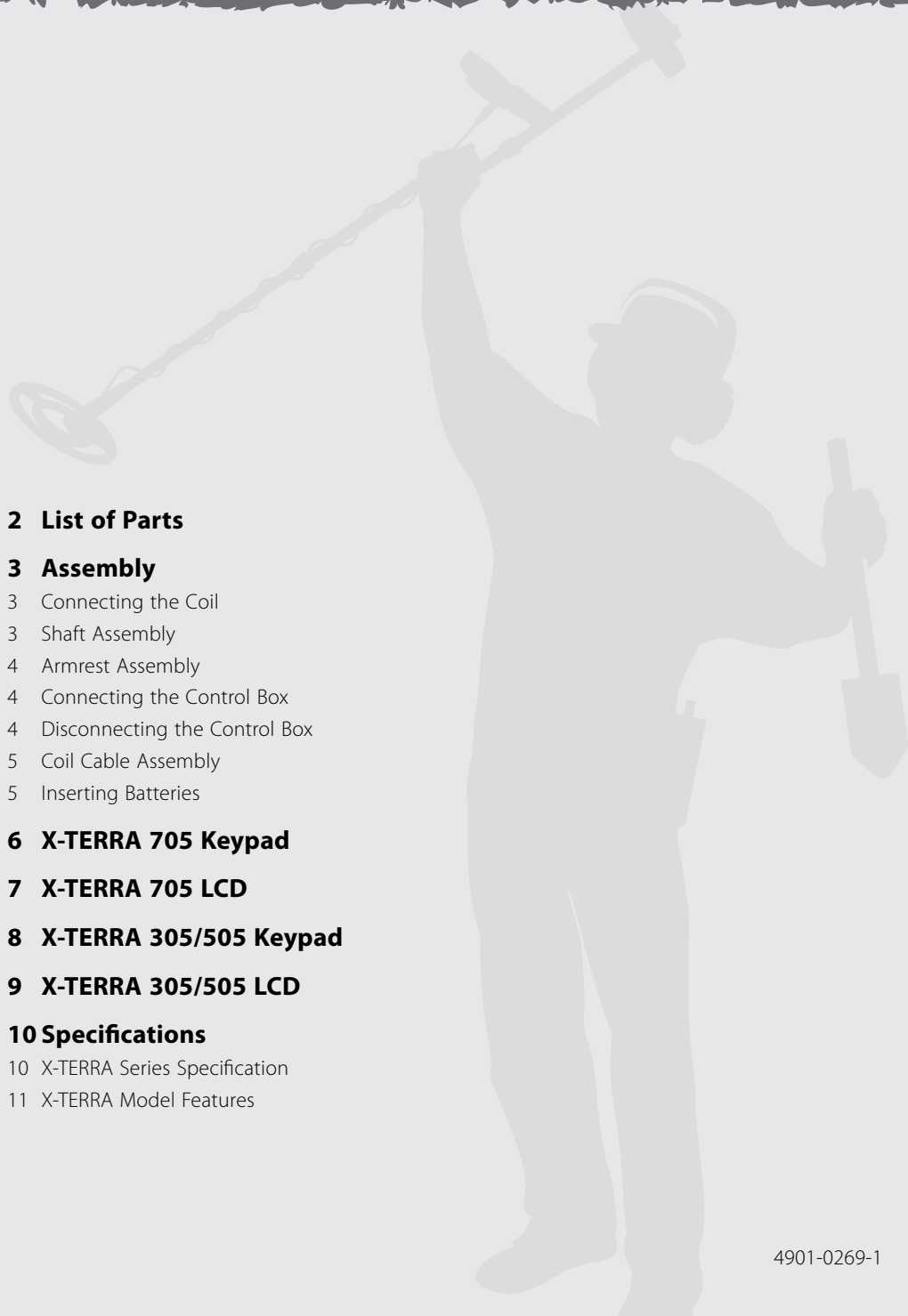


X-TERRA Series

Instruction Manual

305 | 505 | 705





2 List of Parts

3 Assembly

- 3 Connecting the Coil
- 3 Shaft Assembly
- 4 Armrest Assembly
- 4 Connecting the Control Box
- 4 Disconnecting the Control Box
- 5 Coil Cable Assembly
- 5 Inserting Batteries

6 X-TERRA 705 Keypad

7 X-TERRA 705 LCD

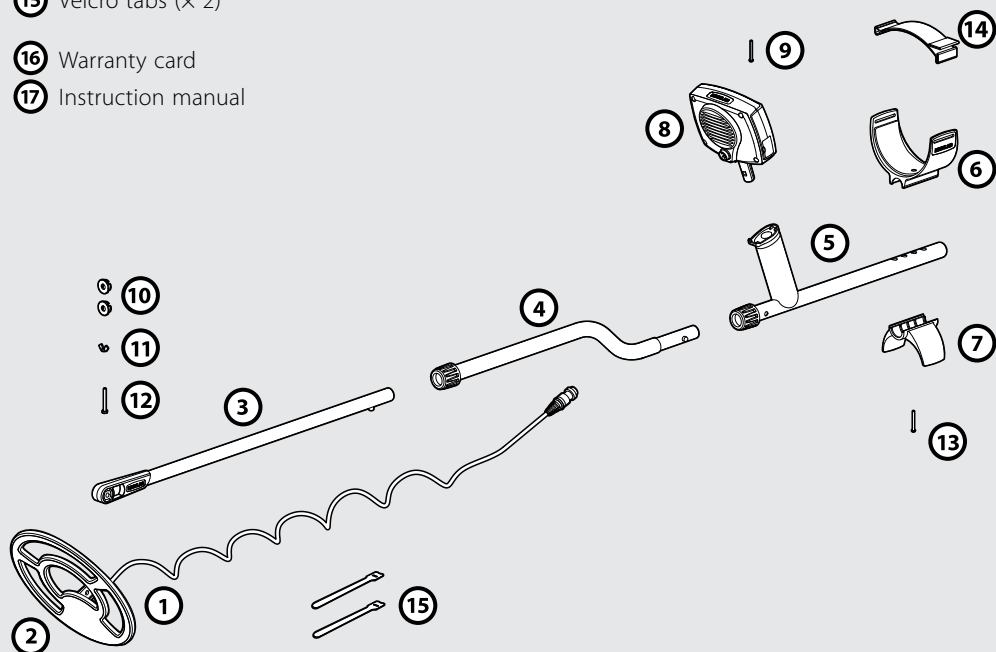
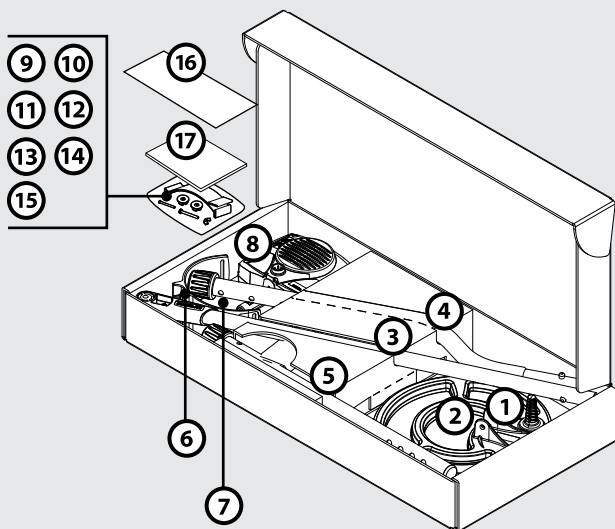
8 X-TERRA 305/505 Keypad

9 X-TERRA 305/505 LCD

10 Specifications

- 10 X-TERRA Series Specification
- 11 X-TERRA Model Features

- ① Coil
- ② Skidplate (fitted to coil)
- ③ Lower shaft
- ④ Middle shaft
- ⑤ Upper shaft
- ⑥ Armrest
- ⑦ Stand
- ⑧ Control box
- ⑨ Control box screw
- ⑩ Rubber washers (× 2)
- ⑪ Plastic wing nut
- ⑫ Plastic bolt
- ⑬ Armrest screw
- ⑭ Armrest strap
- ⑮ Velcro tabs (× 2)
- ⑯ Warranty card
- ⑰ Instruction manual



Connecting the Coil

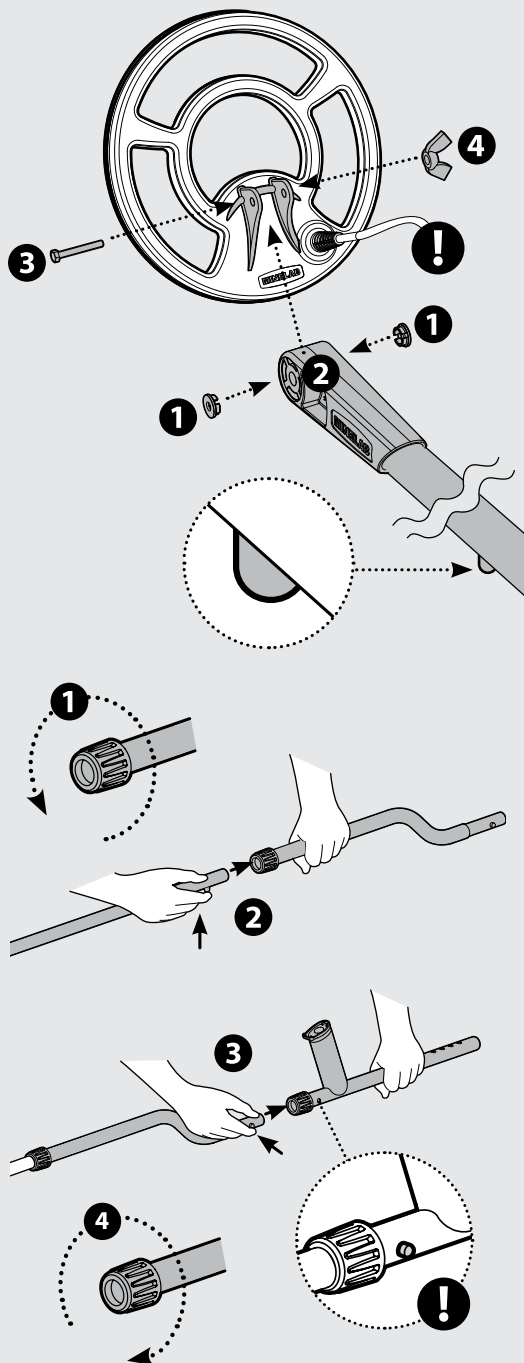
- 1** Insert the two rubber washers into the lower shaft yoke.
- 2** Slide the yoke into the yoke bracket on top of the coil.
- 3** Insert the plastic bolt through the yoke and the yoke bracket.
- 4** Fasten with the plastic wing-nut, being careful not to damage the thread of the bolt by over-tightening.

! The coil cable is directly wired into the coil and is not removable.

Shaft Assembly

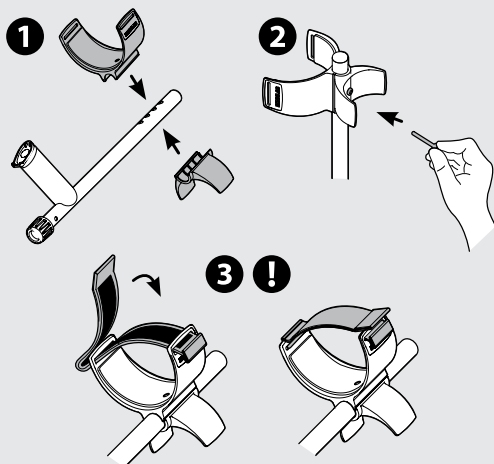
- 1** Loosen twistlocks by rotating them counter-clockwise.
- 2** Insert lower shaft into the middle shaft.
- 3** Attach the middle shaft to the upper shaft.
- 4** Once shafts are assembled, lock their position by rotating the twistlocks clockwise.

! The upper shaft assembly has two spring-loaded pins to strengthen the joint, one on each side of the shaft.



Armrest Assembly

- 1** Place the armrest onto the top of the upper shaft.
- 2** Insert the screw through the stand, upper shaft and armrest, then tighten the screw.
- 3** Thread the armrest strap through both slots in the armrest.



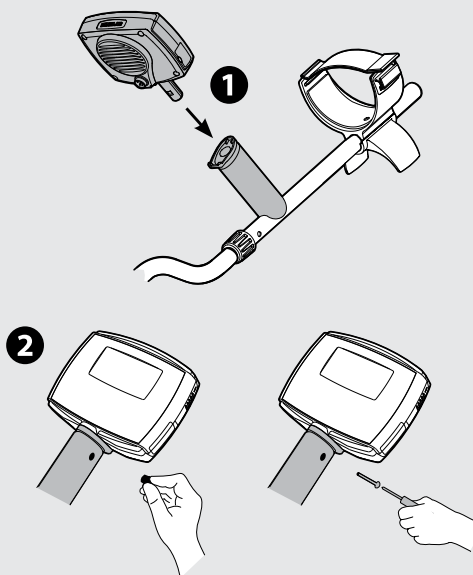
! The X-TERRA is designed to be used in either the left or right hand.

Connecting the Control Box

- 1** With the LCD facing up, push the control box onto the end of the handle.
- 2** Insert the screw provided into the hole and tighten using a phillips-head screwdriver.

Disconnecting the Control Box

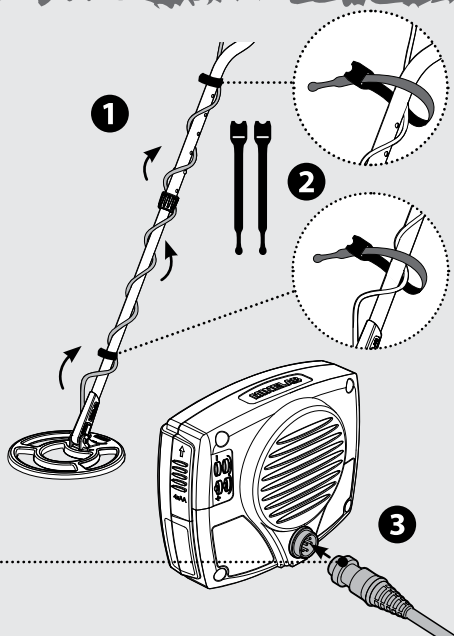
Hold the detector firmly, grasp the control box and pull it away from the handle.



! Remember to remove the screw before attempting to disconnect the control box.

Coil Cable Assembly

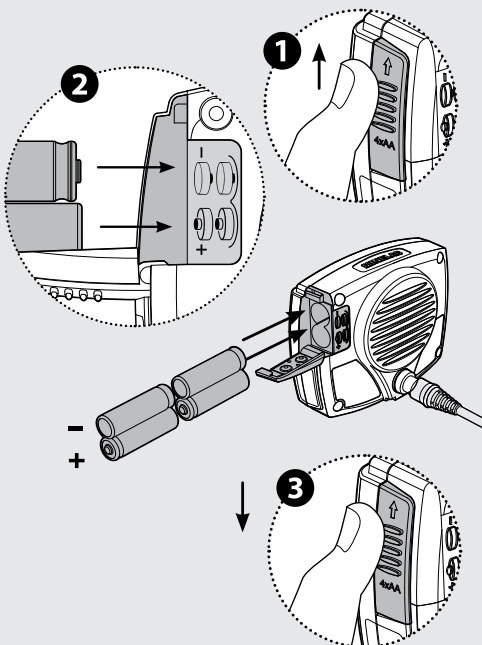
- 1** Wind the coil cable around the lower and middle shaft enough times to take up the slack.
- 2** Use the velcro tabs to hold the coil cable in place against the shaft.
- 3** Align the coil plug and push it into the socket in the back of the control box, firmly tightening the retaining ring to hold it in place.



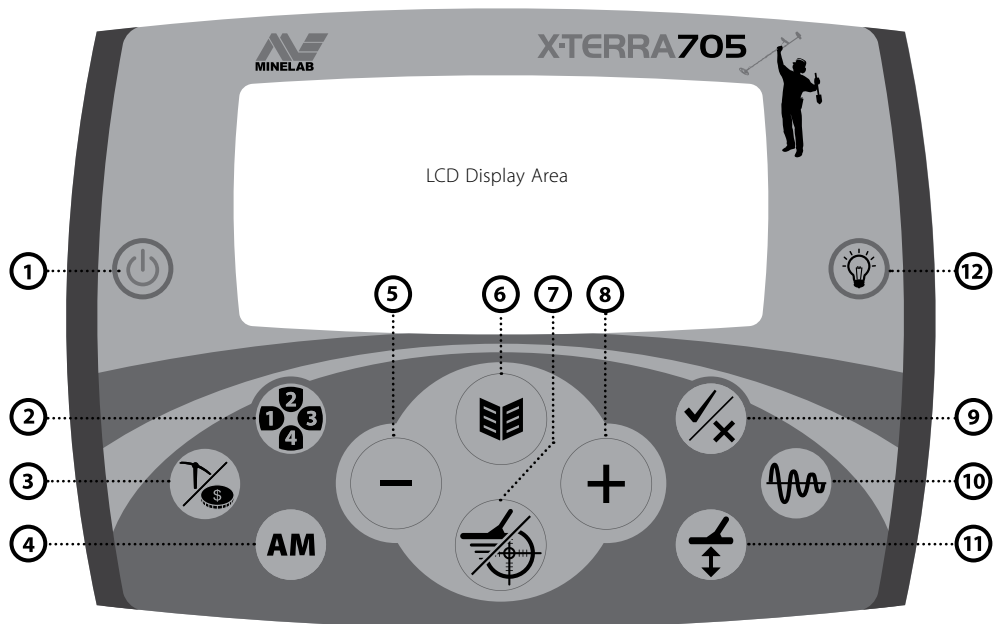
Inserting Batteries

The X-TERRA requires 4 × AA batteries.

- 1** Access the battery compartment via the battery door located on the side of the control box.
- 2** Place batteries into the compartment, ensuring the positive (+) and negative (−) contacts match the diagram.
- 3** Close the battery door by pushing and sliding it downwards.



6 X-TERRA 705 Keypad



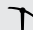
1 Power

2 Patterns: Scrolls through the Discrimination Patterns (Coin & Treasure Mode only).

3 Mode: This button has three functions.

Toggles between Detect Modes:

 Coin & Treasure Mode

 Prospecting Mode

Activates Target ID Stabiliser.

Selects the automatic option for Ground Balance and Noise Cancel.


4 All Metal: Toggles between the selected discrimination pattern and the All Metal pattern.


5 Minus: Adjusts settings, reduces Iron Mask and scrolls to the left through the discrimination segments.

6 Menu/Select: Enters the Menu.

Accesses and scrolls through the detecting settings.

7 Pinpoint/Detect: This button has two functions.

 **Pinpoint** assists in locating the exact position of a target prior to recovery.

 **Detect** exits menu settings and returns to detection.

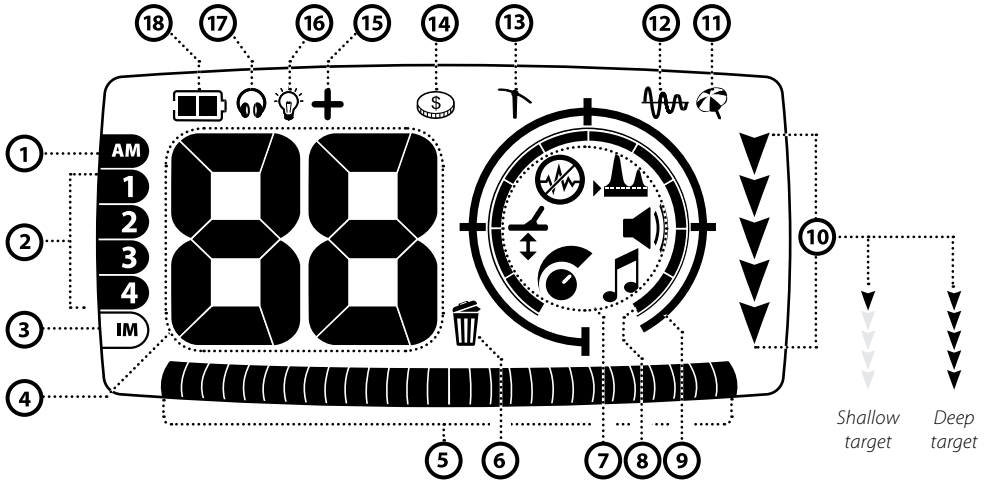
8 Plus: Adjusts settings, increases Iron Mask and scrolls to the right through the discrimination segments.

9 Accept/Reject: Accepts or rejects certain metals by turning on/off individual discrimination segments (Coin & Treasure Mode only).

10 Tracking: Toggles between manual/auto Ground Balance and Tracking Ground Balance.

11 Ground Balance: Activates the Ground Balance adjustment to compensate for different types of soil.

12 Backlight ON/OFF



- 1 **All Metal (AM):** Indicates that the All Metal Pattern has been selected.
- 2 **Patterns:** Preset Discrimination Patterns that suit different search preferences (Coin & Treasure Mode only).
- 3 **Iron Mask (IM):** Indicates that the Iron Mask discrimination has been selected.
- 4 **Target ID:** Target ID numbers range from -8 to 48. Negative numbers indicate ferrous targets and positive numbers indicate nonferrous targets (Coin & Treasure Mode).
- 5 **Discrimination Scale:** Used for Pattern Discrimination (Coin & Treasure Mode only) and Iron Mask Discrimination (Prospecting Mode only).
- 6 **Reject Identification:** Appears when rejecting a discrimination segment. It disappears when accepting a discrimination segment.
- 7 **Menu:** Adjustable settings that can be customised for personal preferences.



Sensitivity



Threshold



Ground Balance



Volume



Noise Cancel

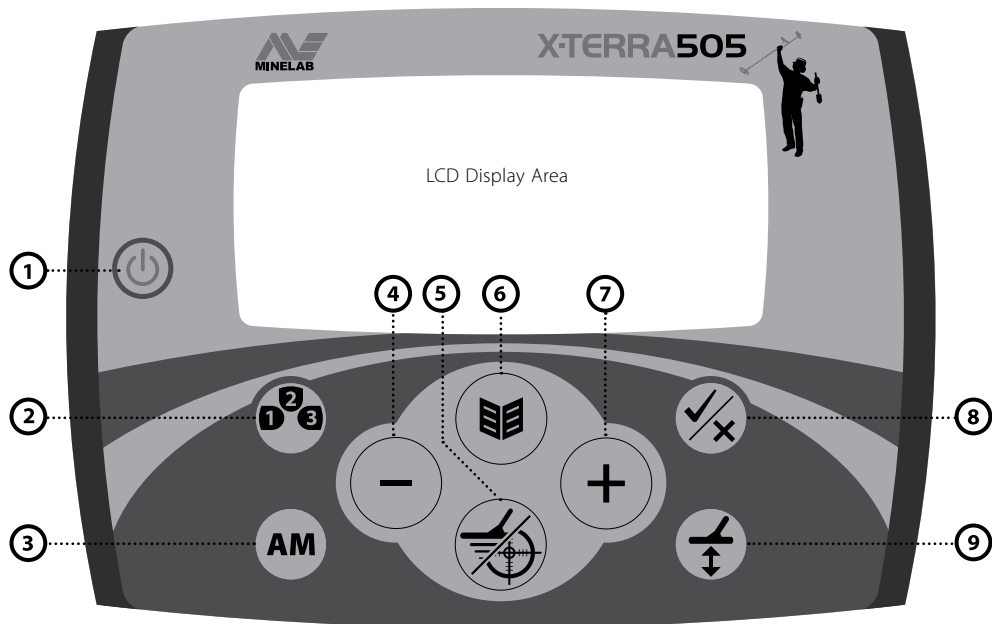


Tones

Note: Ground Balance can only be accessed via the Ground Balance button.

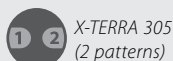
- 8 **Menu Scale:** Provides a visual indication of the value of the selected setting adjustment. The Menu Scale also works with Pinpoint to indicate how close the coil is to the target.
- 9 **Pinpoint Indicator**
- 10 **Depth Indicator:** The depth indicator is a relative guide to how deep a target is. The more arrows displayed, the deeper the target is likely to be (Coin & Treasure Mode only).
- 11 **Beach Mode Indicator**
- 12 **Tracking Ground Balance Indicator**
- 13 **Prospecting Mode**
- 14 **Coin & Treasure Mode**
- 15 **Target ID Stability:** Indicates that Target ID Stability has been selected.
- 16 **Backlight Indicator**
- 17 **Headphones:** Indicates that headphones are connected.
- 18 **Battery Level Indicator**

8 X-TERRA 305/505 Keypad



1 Power


2 Patterns: Scrolls through the Discrimination Patterns.




3 All Metal: Toggles between the selected discrimination pattern and the All Metal pattern.

4 Minus: Adjusts settings, reduces Iron Mask and scrolls to the left through the discrimination segments.

5 Pinpoint/Detect: This button has two functions.

 **Pinpoint** assists in locating the exact position of a target prior to recovery.

 **Detect** exits menu settings and returns to detection.

6 Menu/Select: Enters the Menu.

Accesses and scrolls through the detecting settings.

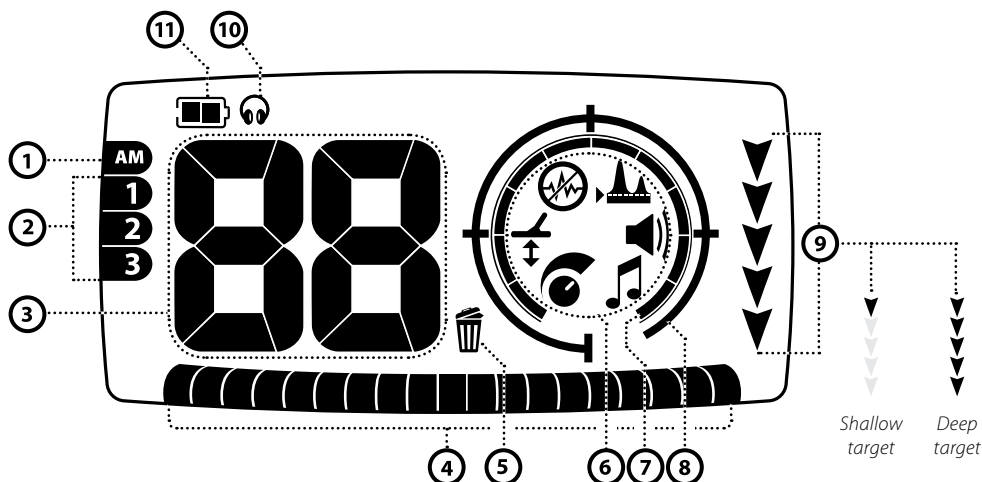
7 Plus: Adjusts settings, and scrolls to the right through the discrimination segments.

8 Accept/Reject: Accepts or rejects certain metals by turning on/off individual discrimination segments.

9 Ground Balance: Activates the Ground Balance adjustment to compensate for different types of soil.



The X-TERRA 305 Keypad. X-TERRA 305 has 2 patterns only. All other buttons are the same as the X-TERRA 505.



- ① **All Metal (AM):** Indicates that the All Metal Pattern has been selected.

- ② **Patterns:** Preset Discrimination Patterns that suit different search preferences.



X-TERRA 305
(2 patterns)



X-TERRA 505
(3 patterns)

- ③ **Target ID:** X-TERRA 305 Target ID numbers range from -4 to 44.

X-TERRA 505 Target ID numbers range from -9 to 48.

Negative numbers indicate ferrous targets and positive numbers indicate nonferrous targets.

- ④ **Discrimination Scale:** Used for Pattern Discrimination.

- ⑤ **Reject Identification:** Appears when rejecting a discrimination segment. It disappears when accepting a discrimination segment.

- ⑥ **Menu:** Adjustable settings that can be customised for personal preferences.



Sensitivity



Ground Balance



Noise Cancel



Threshold



Volume



Tones

Note: Ground Balance can only be accessed via the Ground Balance button.

- ⑦ **Menu Scale:** Provides a visual indication of the value of the selected setting adjustment. The Menu Scale also works with Pinpoint to indicate how close the coil is to the target.

- ⑧ **Pinpoint Indicator**

- ⑨ **Depth Indicator:** The depth indicator is a relative guide to how deep a target is. The more arrows displayed, the deeper the target is likely to be.

- ⑩ **Headphones:** Indicates that headphones are connected.

- ⑪ **Battery Level Indicator**

10 Specifications

X-TERRA Series Specification

Transmission	Single Frequency Sine Wave
Technology	VFLEX
Coil	Standard 9" Concentric 7.5kHz (waterproof)
Audio	Internal Speaker and Headphone Output
Search Mode	Motion Detector
Batteries <i>(not included)</i>	4 × AA Alkaline/Carbon/Lithium or NiMH/NiCad
Length	Extended: 56" (1420 mm) Collapsed: 48" (1220 mm)
Weight <i>(Excluding Batteries)</i>	2.9lbs (1.3kg)
Optional Accessories	Headphones, Skidplates, Environmental Cover, Accessory Coils, Short Shaft

X-TERRA Model Features

	X-TERRA 305	X-TERRA 505	X-TERRA 705
Coil Frequency Options	2: 7.5kHz, 18.75kHz)	3: 3kHz, 7.5kHz, 18.75kHz	3: 3kHz, 7.5kHz, 18.75kHz
Detecting Modes	Coin & Treasure	Coin & Treasure	Coin & Treasure, Prospecting
Discrimination Patterns	1, 2, All Metal	1, 2, 3, All Metal	1, 2, 3, 4, All Metal
Iron Mask Discrimination	No	No	0 to 20
Discrimination Segments	12 Ferrous: 1 Nonferrous: 11	19 Ferrous: 3 Nonferrous: 16	28 Ferrous: 4 Nonferrous: 24
Target ID Numbers	Increments of 4 (-4, 4, 8, 12, 16, 20, 24, 28, 32, 36, 40, 44)	Increments of 3 (-9, -6, -3, 3, 6, 9, 12, 15, 18, 21, 24, 27, 30, 33, 36, 39, 42, 45, 48)	Increments of 2 (-8, -4, -2, 0, 2, 4, 6, 8, 10, 12, 14, 16, 18, 20, 22, 24, 26, 28, 30, 32, 34, 36, 38, 40, 42, 44, 46, 48)
Depth Indication Icons	5	5	5
Sensitivity Adjustment	1 to 10	1 to 20	1 to 30
Noise Cancel Channels	3 Channels (-1, 0, 1)	5 channels (-2, -1, 0, 1, 2)	5 Channels (-2, -1, 0, 1, 2), Manual & Automatic
Ground Balance Adjustment	Manual (0 to 20)	Manual (0 to 50)	Manual (1 to 90), Auto, Tracking, Beach
Pinpoint <i>(Audio & Visual)</i>	Yes	Yes	Yes, 2 modes: Auto and Sizing
Volume Adjustment	0 to 10	0 to 30	0 to 30
Threshold Adjustment	-5 to 25	-5 to 25	-5 to 25
Target ID Audio Tones	1, 2, 3, Multi	1, 2, 3, 4, Multi	1, 2, 3, 4, Multi
Low Battery Audio Alarm	Yes	Yes	Yes
User Interface Buttons	8 + Power	8 + Power	11 + Power
LCD Segments	56	64	82
Visual Display	Monochrome positive reflective LCD	Monochrome positive reflective LCD	Monochrome transfective LCD
LCD backlight	No	No	Yes

COMPLIANCE

THIS DEVICE COMPLIES WITH PART 15 OF THE FCC RULES. OPERATION IS SUBJECT TO THE FOLLOWING TWO CONDITIONS: (1) THIS DEVICE MAY NOT CAUSE HARMFUL INTERFERENCE, AND (2) THIS DEVICE MUST ACCEPT ANY INTERFERENCE RECEIVED, INCLUDING INTERFERENCE THAT MAY CAUSE UNDESIRABLE OPERATION.

Information to the User (FCC Part 15.105)

NOTE: Class B Devices

This equipment has been tested and found to comply with the limits for a Class B digital device, pursuant to part 15 of the FCC Rules. These limits are designed to provide reasonable protection against harmful interference in a residential installation.

This equipment generates, uses and can radiate radio frequency energy and, if not installed and used in accordance with the instructions, may cause harmful interference to radio communications. However, there is no guarantee that interference will not occur in a particular installation. If this equipment does cause harmful interference to radio or television reception, which can be determined by turning the equipment off and on, the user is encouraged to try to correct the interference by one or more of the following measures:

- Reorient or relocate the receiving antenna
- Increase the separation between the equipment and receiver
- Connect the equipment into an outlet on a circuit different from that to which the receiver is connected
- Consult the dealer or an experienced radio/TV technician for help

EU DECLARATION OF CONFORMITY

Hereby, Minelab Electronics declares that the radio equipment type X-TERRA 305/505/705 is in compliance with Directive 2014/53/EU. The full text of the EU declaration of conformity is available at the following internet address:

www.minelab.com/compliance

RADIO FREQUENCY SPECIFICATION

Frequency	Power
2.7 to 20 kHz	<-30 dBm

DISCLAIMER

The Minelab metal detector discussed in this instruction manual has been expressly designed and manufactured as a quality metal detector and is recommended for treasure and gold detecting in nonhazardous environments. This metal detector has not been designed for use as a mine detector or as a live munitions detection tool.

This work is licensed under the Creative Commons Attribution- NonCommercialNoDerivatives 4.0 International License.



To view a copy of this license, visit:

<http://creativecommons.org/licenses/by-nc-nd/4.0/>

© MINELAB ELECTRONICS PTY LTD.



Minelab Electronics,
PO Box 35, Salisbury South
South Australia 5106



Australia & Asia Pacific
minelab@minelab.com.au

Europe & Russia
minelab@minelab.ie

North, South & Central America
minelab@minelab.com

Middle East & Africa
minelab@minelab.ae

Minelab Do Brazil
minelabdobrazil@minelab.com

www.minelab.com



THE ORIGINAL ADVENTURE