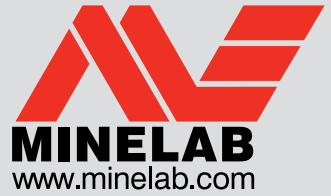


Field Guide

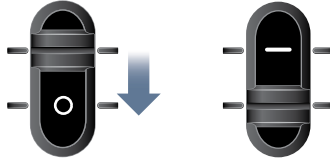
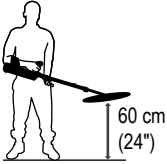
F3 UXO Detector



Operation

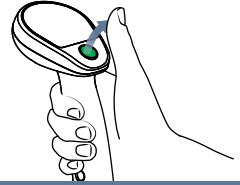
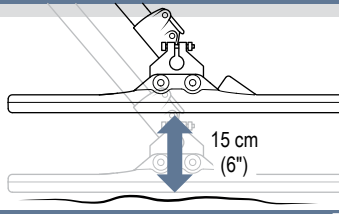
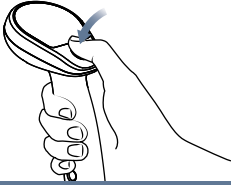
1.

Switch On



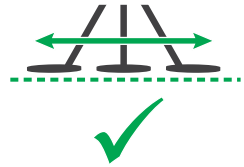
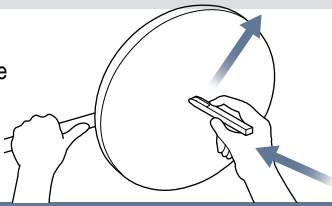
2.

Ground
Balance



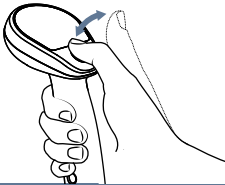
3.

Test Piece



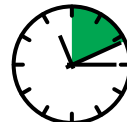
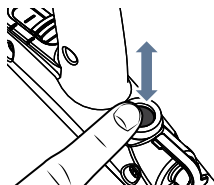
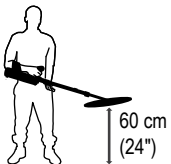
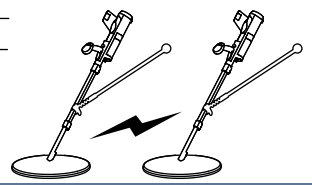
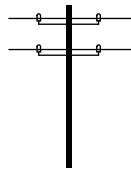
4.

Audio Reset

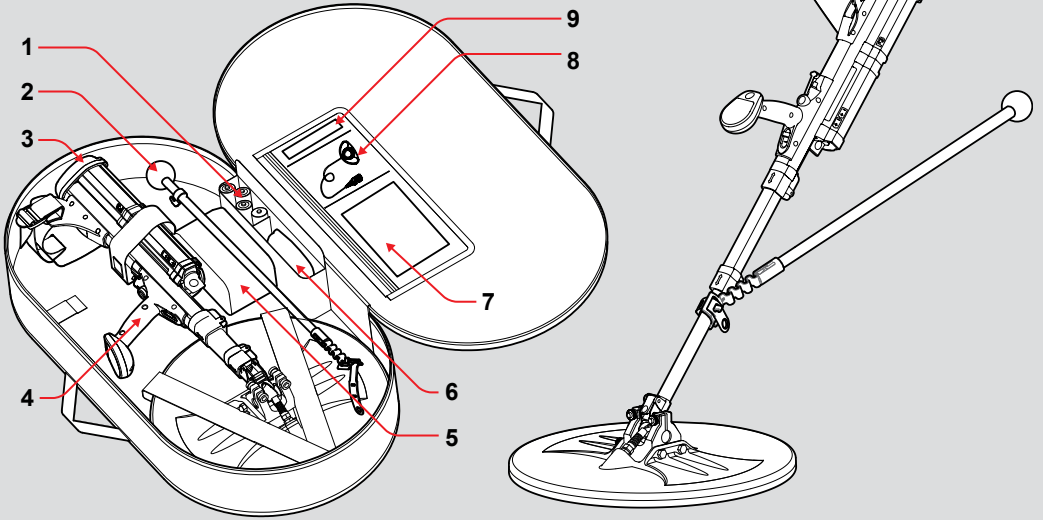


5.

Noise Cancel

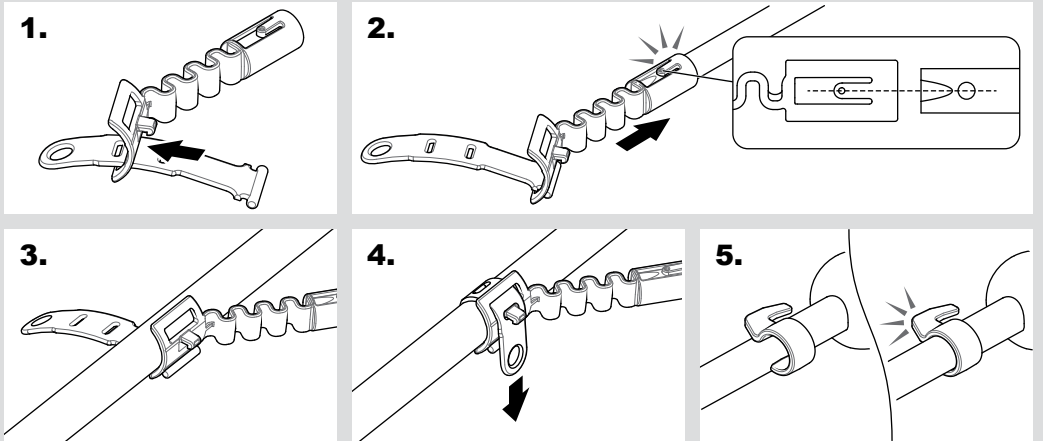


F3 UXO Configuration



- | | | |
|---------------------------|--|---|
| 1. Batteries 4 × D Cell | 5. Battery Pack Bag & Extension Cable (Optional) | 7. Field Guide, Interchange Procedure & Operations Manual |
| 2. Guide Arm | 6. Red Endcap (Yellow Endcap Optional) | 8. Earset |
| 3. Black Endcap (Default) | | 9. Test Piece |
| 4. F3 UXO Detector | | |

Guide Arm Assembly



F3 Endcap Guide



Black
High Sensitivity
(Default Endcap)



Red
Reduced Sensitivity



Yellow
Detector Settings Customisable Via PC